

# **ACS WASC Accreditation Status Explanation for International Schools**





Accreditation Status Recommendation
for International Schools

Name of School Visited:
Address of School:

NOT FOR OFFICIAL USE

Name of District:
Manual:
Visit:
Date of Visit:
Accredited Grade Span:

CONTACT THE ACS WASC OFFICE FOR
PREPRINTED FORM

Enrollment:

ACS WASC accreditation is an ongoing six-year cycle of quality whereby the school demonstrates the capacity,
commitment, and competence to support high-quality student learning and ongoing school improvement.

The Visiting Committee's CONFIDENTIAL recommendation to the Accrediting Commission:

Form with three main sections: Six-Year Accreditation Status, Probationary Accreditation Status with an In-depth Progress Report and Two-Day Visit, and Accreditation Status Withheld. Each section includes a checkbox, a description of the status, and a requirement to provide rationale in the Justification Statement.

Note: The Commission reserves the right to grant accreditation status other than those above, including a recommendation for a full self-study at any time. Such action will follow a Commission review of the visiting committee report. In the event of a formal appeal, this document will be provided to the school's chief administrator.

VISITING COMMITTEE MEMBERS

Blank lines for member names and signatures, with labels: Type or print name, Signature, Committee Chairperson, Date

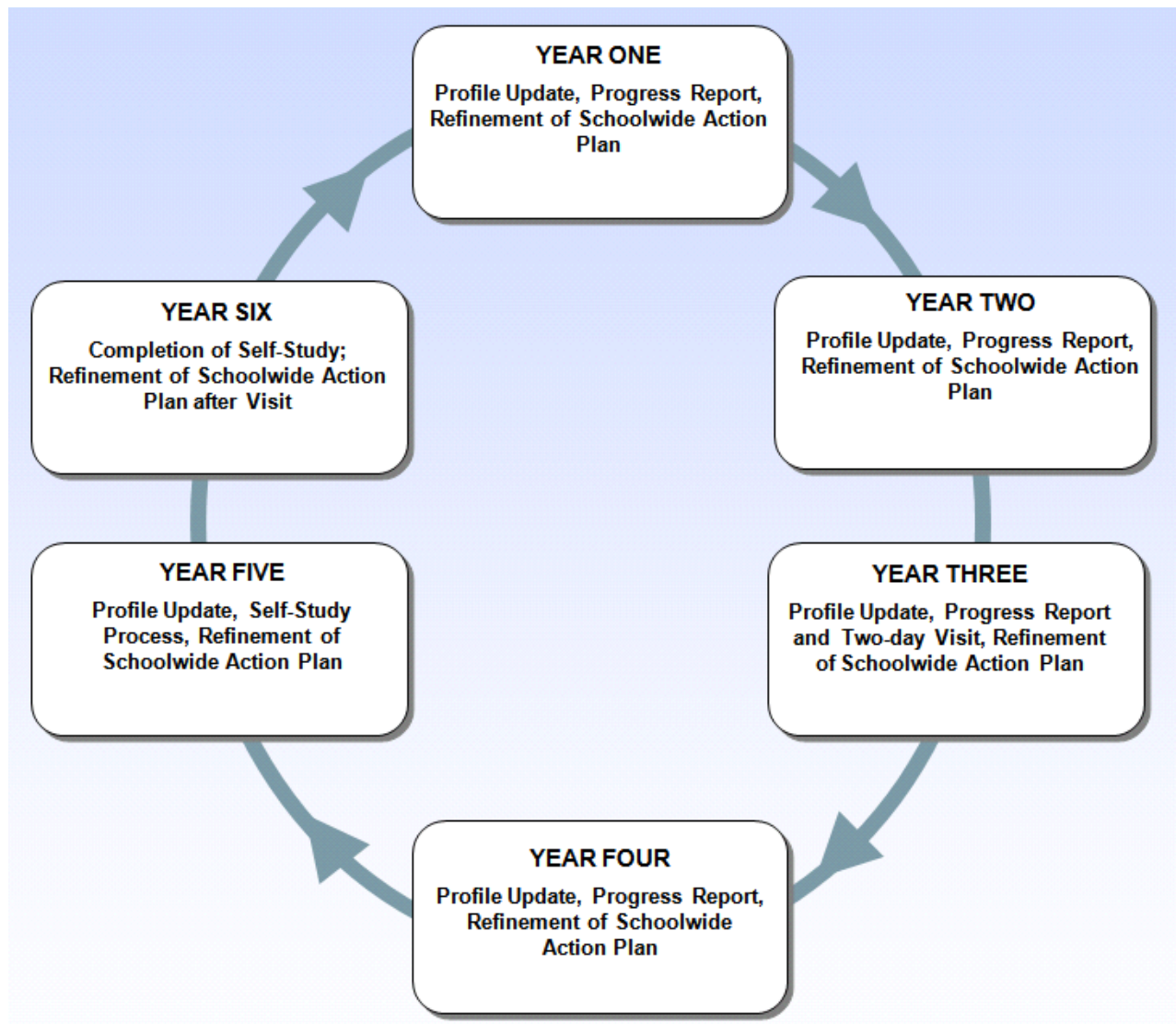


## ACS WASC Accreditation Cycle of Quality: A Focus on Learning

ACS WASC accreditation is an ongoing six-year cycle of quality whereby the school demonstrates the capacity, commitment, and competence to support high-quality student learning and ongoing school improvement. The school assesses its program and its impact on student learning with respect to the ACS WASC criteria, indicators, and other accreditation factors. Schools are expected to participate in self-study training provided by ACS WASC throughout the 18 months prior to the full self-study visit. This self-study process culminates in the refinement of a 3–5 year schoolwide action plan. Throughout the cycle, a school is expected to address the schoolwide action plan and demonstrate evidence of acceptable student achievement and school improvement.

Using the ACS WASC criteria, indicators, and other accreditation factors, the visiting committee will base its accreditation status recommendation on evidence contained in the self-study and encountered during the school visit indicating:

- The degree to which high achievement by all students is occurring
- The capacity of the school to implement, monitor, and accomplish the action plan aligned to the areas of greatest need impacting student achievement
- The school's position with respect to institutional and/or governing authority expectations.





## Accreditation Status Explanation\*

**Overall Question:** What accreditation status option best supports defined high-quality learning for all students and the school's improvement needs?

### **Six-Year Accreditation Status with a Mid-cycle Progress Report and Two-Day Visit**

Based on the *ACS WASC criteria, indicators, and other accreditation factors/rubrics*, this option is appropriate if there is compelling evidence that the school needs little, if any, additional support for high-quality student learning and the implementation, monitoring, and accomplishment of the schoolwide action plan, including the identified critical areas for follow-up.

**Annual Progress Report:** The school is expected to report progress annually to its governing body and stakeholders, update the student/community profile, and refine its schoolwide action plan as needed. A copy of the annual progress report should be submitted to ACS WASC.

**Mid-cycle Report and Visit:** The school will be required to submit a comprehensive mid-cycle progress report and host a two-day visit demonstrating that the school has:

- Addressed the critical areas for follow-up throughout the schoolwide action plan
- Made appropriate progress on implementation of the schoolwide action plan
- Improved student achievement relative to the schoolwide learner outcomes and the academic standards.

ACS WASC will review the mid-cycle progress report to affirm the accreditation status and determine whether any additional reports, visits, or other conditions will be required.

**Special Conditions:** A school may benefit from an additional report and/or visit prior to the mid-cycle.

### **One- or Two-Year Probationary Accreditation Status with an In-depth Progress Report and Two-Day Visit**

Based on the *ACS WASC criteria, indicators, and other accreditation factors/rubrics*, this option is appropriate when the school deviates significantly from the ACS WASC criteria in one or more critical areas and needs serious additional support, feedback, and encouragement in meeting the identified critical areas for follow-up in the visiting committee report. A *one-year* probationary status indicates there is a need for immediate attention and support. A *two-year* probationary status signifies the need for prompt attention and support, but more time may be needed to address the identified issue(s).

**Probationary Accreditation Report and Visit:** The school will be required to host a two-day visit in one or two years and submit an in-depth progress report demonstrating that the school has:

- Addressed the critical areas for follow-up through implementation of the schoolwide action plan
- Made appropriate progress on this implementation of the schoolwide action plan
- Improved student achievement relative to the schoolwide learner outcomes and the academic standards.

After the probationary visit, the ACS WASC Commission will grant one of the following:

- Continued probationary accreditation for one additional year of the accreditation cycle (applicable for one-year probationary accreditation only)
- Probation removed and full accreditation status restored; the accreditation cycle continues with an in-depth progress report and two-day mid-cycle visit
- Accreditation status withheld.

---

\* No changes have been made to the ACS WASC initial visit process.

---

## Accreditation Status Withheld

Based on the *ACS WASC criteria, indicators, and other accreditation factors/rubrics*, this option is appropriate if there is compelling evidence that the school does not meet the ACS WASC criteria and deviates significantly in several critical areas that impact student learning and well-being, the school's program, and/or supporting operations.

In order to be reinstated, the school must submit a reinstatement report that addresses the identified critical areas for follow-up and provide sufficient evidence of the progress made. ACS WASC will then decide upon an appropriate time for a two-day Reinstatement Visit. The visit must occur within **18 months** from the date of the Commission's decision to withhold accreditation or the school will need to reapply for accreditation through the Initial Visit process:

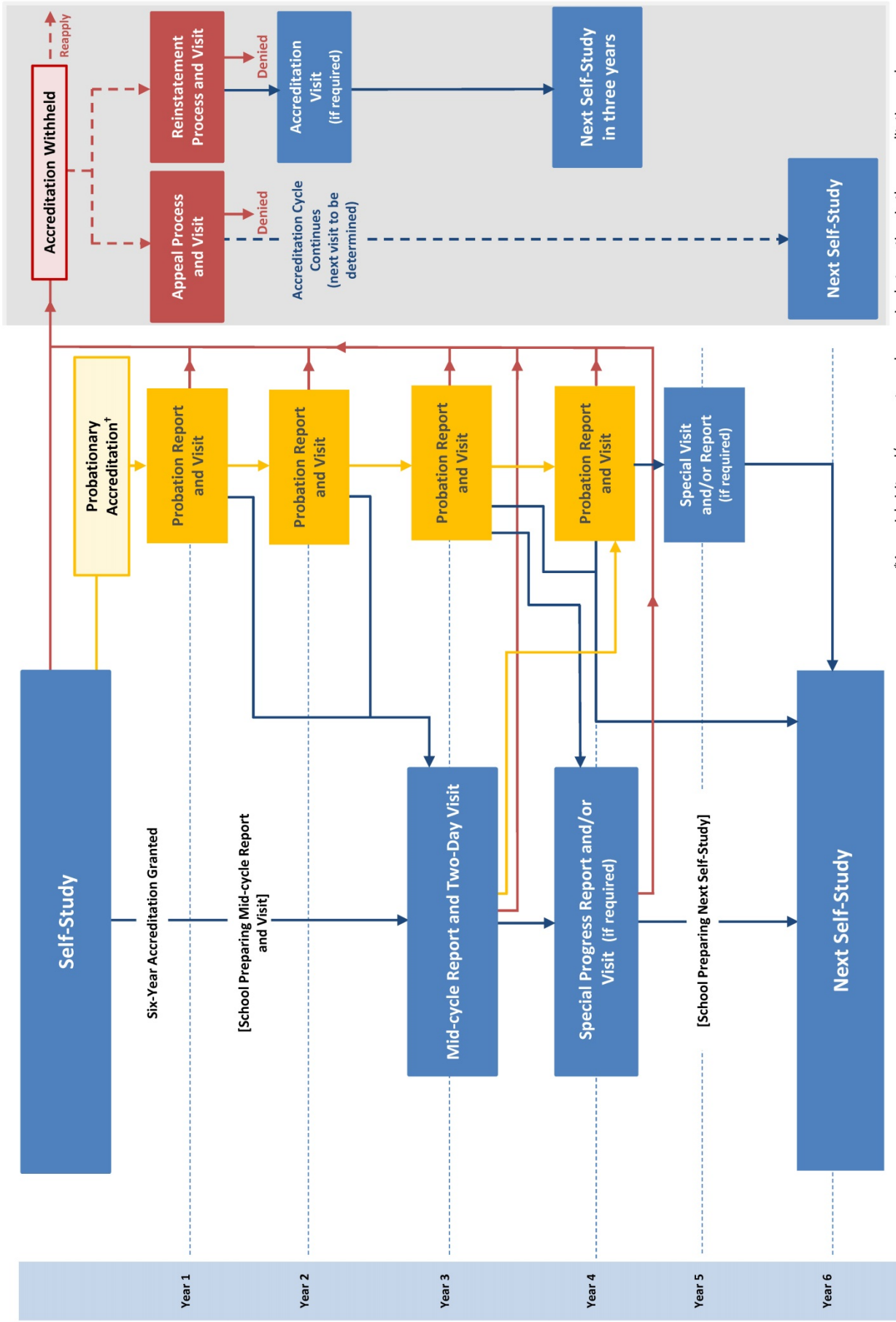
After the reinstatement visit, the ACS WASC Commission may grant one of the following:

- Accreditation status with annual in-depth progress reports and a full self-study within three years of reinstatement
- Accreditation status with an in-depth progress report and two-day visit in one year and a full self-study within three years of reinstatement
- Accreditation status withheld.

**NOTE: The Commission reserves the right to grant accreditation status other than those above, including a recommendation for a full self-study at any time. Such action will follow a Commission review of the Visiting Committee Report. In the event of a formal appeal, this document will be provided to the school's chief administrator.**



# ACS WASC Accreditation Status Timeline for International Schools\*



\* A special visit and/or report may be required at any time in the accreditation cycle.  
 † Probationary accreditation status may be appealed.